



# WA's milk balance has reached critical levels

Between 2010/11 and 2012/13 WA lost 25 million litres of milk production.

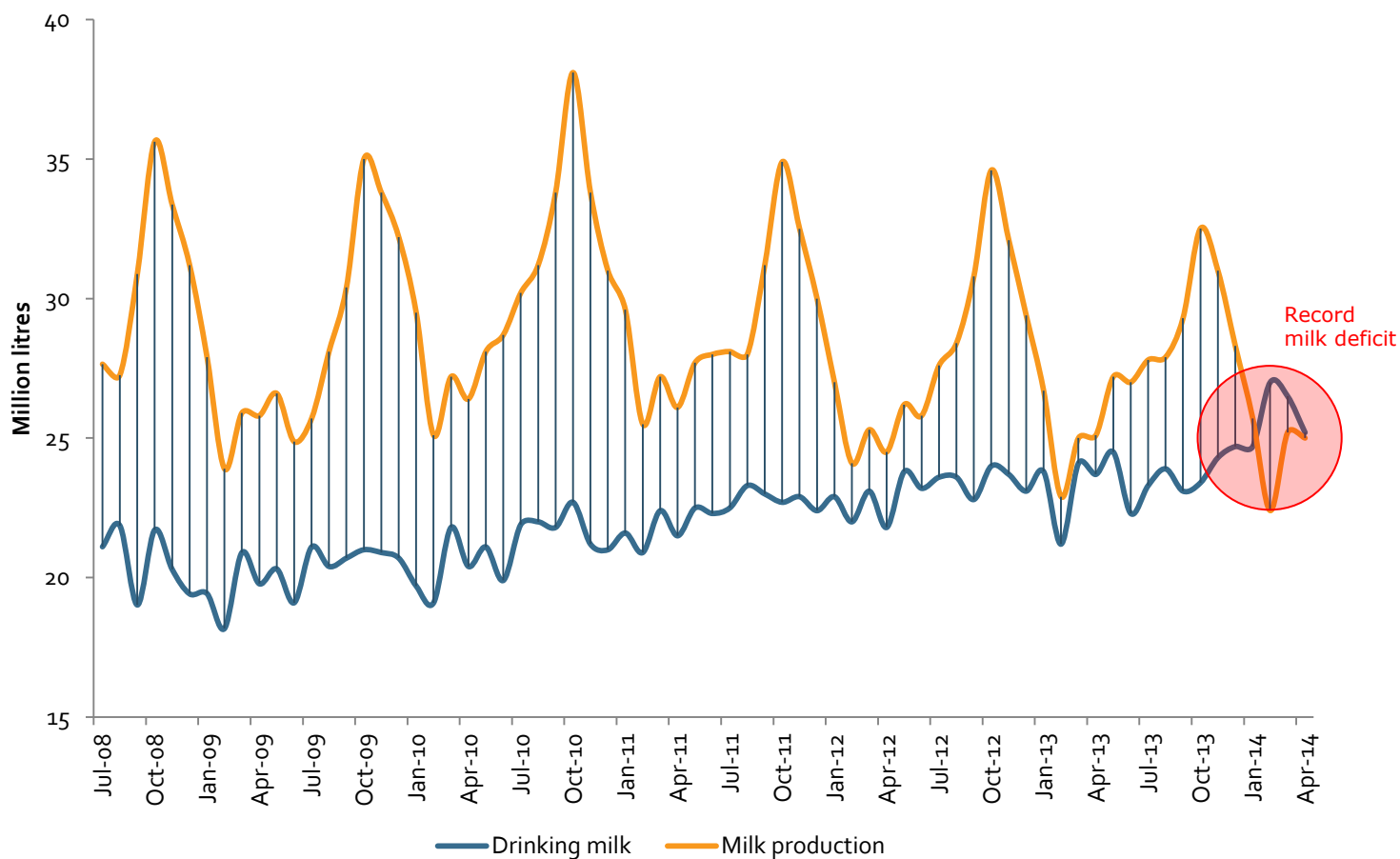
In 11 months of the 2013/14 season, WA milk production has fallen a further 2.8%.

At the same time, consumption of milk and dairy has continued; albeit at a modest rate.

This has critically squeezed the milk balance in WA.

Milk processors have begun efforts to sure up milk supply with recent price increases and growth incentives.

### WA monthly milk balance



Source: Dairy Australia, Rabobank